

TerraCast[®]

PRODUCTS

ANCHOR BASE BOLLARD INSTALLATION INSTRUCTIONS

Hardware Included:

- 2 – anchor bolts
- 2 – washers
- 2 – nuts
- 2 – decorative nut covers
- 1 – foundation template

Recommendations for preparing the foundation:

1. The foundation size must be at least 10" in diameter and approximately 15" deep. Consult local electrical code for wiring type and required foundation depth.
2. Bolt height should be approximately 2" above the surface of the foundation. See Fig. 1
3. Run underground wire inside conduit to power source. Installation wires must be 6" longer than the base height. See Fig. 2

Attaching bollard top to bollard base:

Hardware included:

- 3 – Screws - #10 Sheet Metal Screws – 1" long

1. Run electrical wires through the galvanized steel post located in the center of the base, leaving approximately 6" of wire at the top of the base to attach to the bollard top – Figure #2
2. Attach the plate to the bollard base - use a 1/8 inch drill bit to make a pilot hole on the marks indicated, and insert screw. See Figure #3

Attaching bollard base to foundation:

1. Place the base over the anchor bolts, securing it to the foundation with the washers and nuts – Figure #4
2. Cover nuts with decorative plastic covers – Figure #5

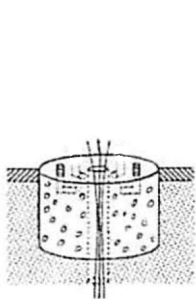


Fig. 1

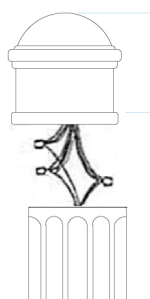


Fig. 2



Fig. 3

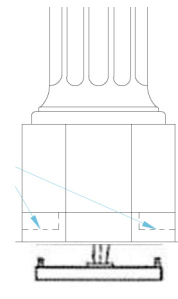


Fig. 4

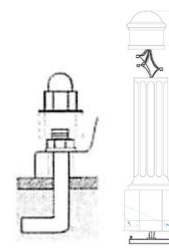


Fig. 5

If further assistance is needed, please contact Customer Service: 305-895-9525 x105