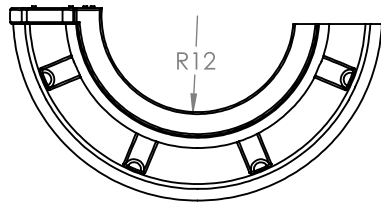
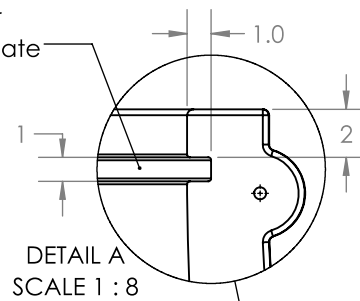


B

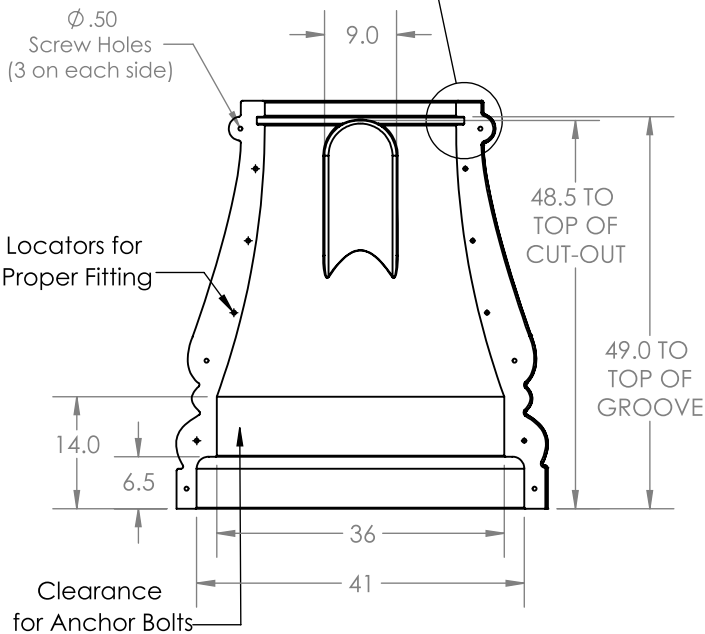


Groove for
Adjustment Plate

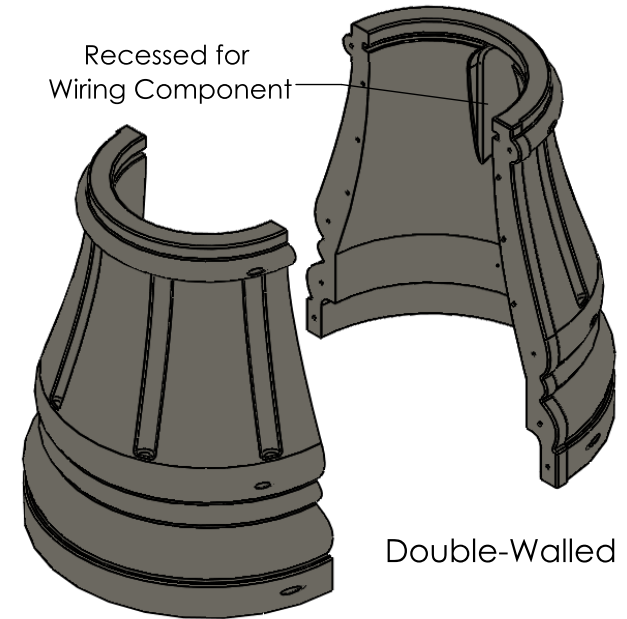


Ø .50
Screw Holes
(3 on each side)

Locators for
Proper Fitting



Recessed for
Wiring Component



B

A

A

PROPRIETARY AND CONFIDENTIAL
THE INFORMATION CONTAINED IN THIS DRAWING IS
THE SOLE PROPERTY OF TerraCast Products, LLC.
ANY REPRODUCTION IN PART OR AS A WHOLE
WITHOUT THE WRITTEN PERMISSION OF
TerraCast Products, LLC IS PROHIBITED.

UNLESS OTHERWISE SPECIFIED:
DIMENSIONS ARE IN INCHES

All measurements are rounded
to the closest quarter inch and
may not be exact due to
manufacturing variances.

MATERIAL

LLDPE Resin

FINISH

SCALE: 1:24

DO NOT SCALE DRAWING

DRAWN

NAME

DATE

SIZE
A

TITLE:

Tampa Base

REV
E

TerraCast[®]
PRODUCTS
4400 NW 19th Avenue, Unit K, Pompano Beach, FL 33064
info@terraCastproducts.com p: 305.895.9525
www.terraCastproducts.com

2

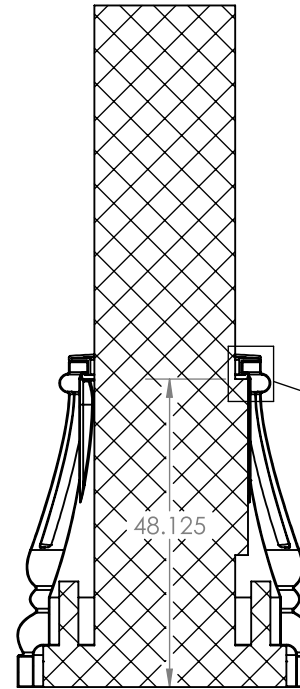
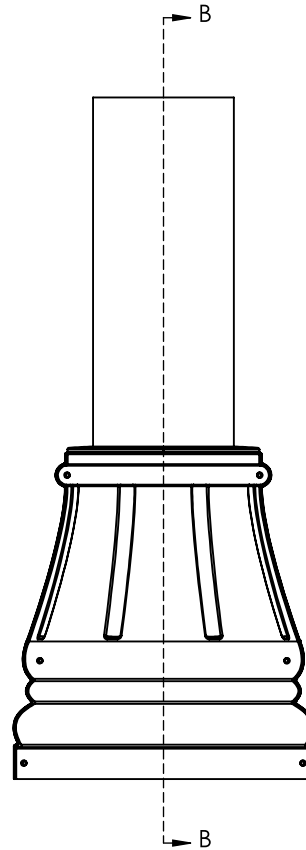
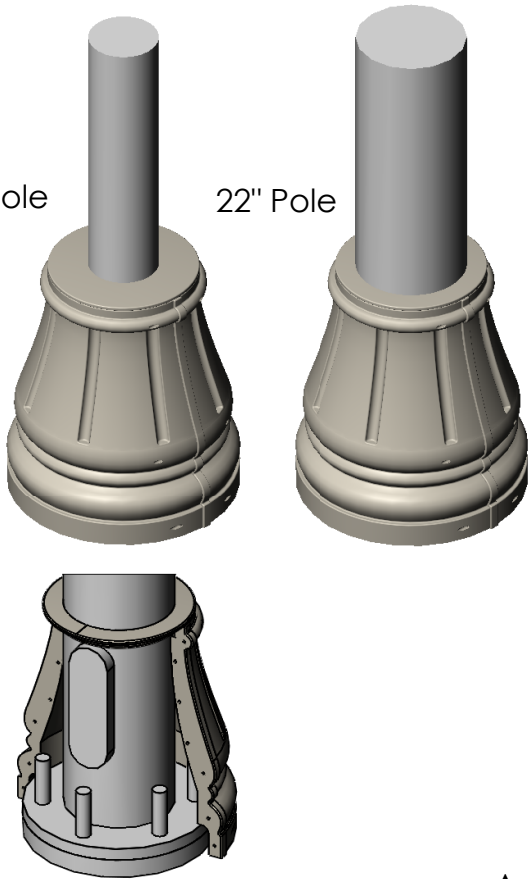
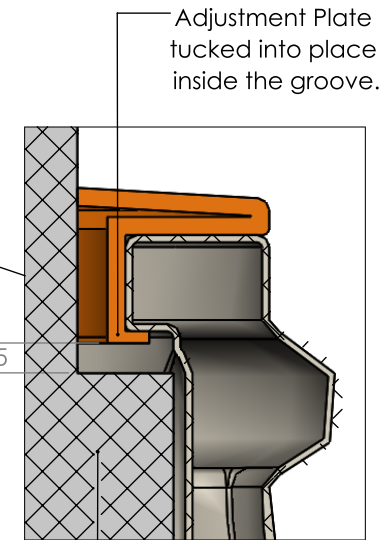
1

Sheet 1 OF 2

B

14" Pole

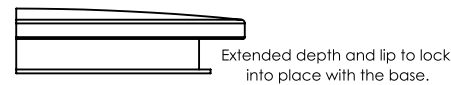
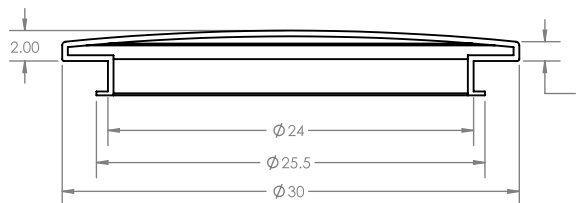
22" Pole

SECTION B-B
SCALE 1 : 30DETAIL C
SCALE 1 : 4

Adjustment Plate
tucked into place
inside the groove.

Wiring component
secured inside
recessed area.

Adjustment Plate Details



Extended depth and lip to lock
into place with the base.

PROPRIETARY AND CONFIDENTIAL
THE INFORMATION CONTAINED IN THIS DRAWING IS
THE SOLE PROPERTY OF TerraCast Products, LLC.
ANY REPRODUCTION IN PART OR AS A WHOLE
WITHOUT THE WRITTEN PERMISSION OF
TerraCast Products, LLC IS PROHIBITED.

UNLESS OTHERWISE SPECIFIED:
DIMENSIONS ARE IN INCHES

All measurements are rounded
to the closest quarter inch and
may not be exact due to
manufacturing variances.

MATERIAL

LLDPE Resin

FINISH

SCALE: 1:24

DO NOT SCALE DRAWING

DRAWN

NAME

DATE

SIZE
A

TITLE:

Tampa Base

REV
E

TerraCast[®]

PRODUCTS

4400 NW 19th Avenue, Unit K, Pompano Beach, FL 33064
info@terraCastproducts.com p: 305.895.9525
www.terraCastproducts.com