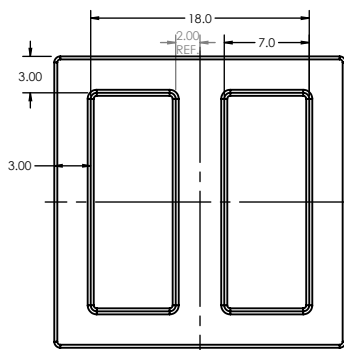
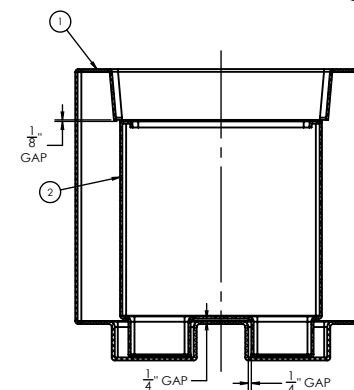
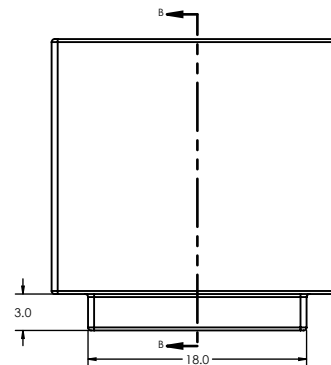
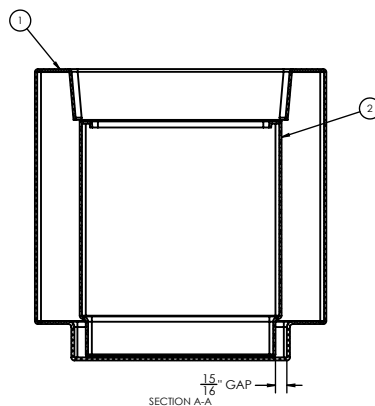
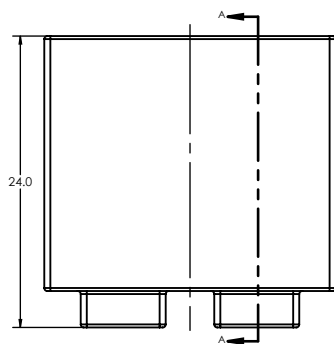
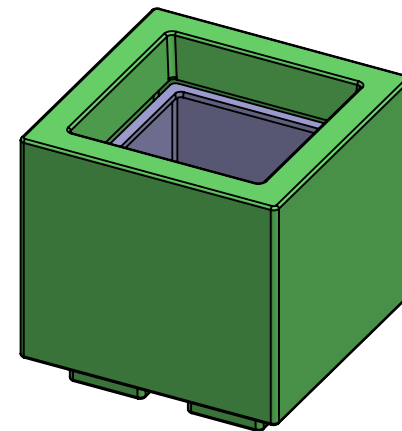
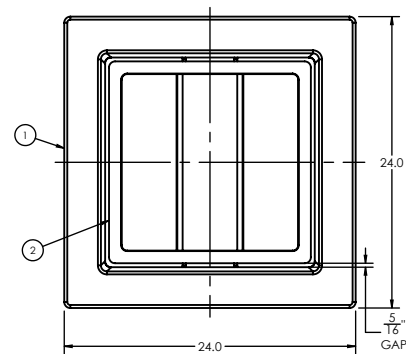


# TerraCast<sup>®</sup>

## PRODUCTS

TERRACAST PRODUCTS LLC  
4400 NW 19TH AVENUE, UNIT K  
POMPANO BEACH, FL 33064  
305-895-9525  
INFO@TERRACASTPRODUCTS.COM

ITEM NO.	PART NUMBER	QTY.
1	24x24x24 Millennium Planter Shell	1
2	24x24x24 Millennium Planter Liner	1



### SPECS AT A GLANCE

TOP ID: 15.5" x 15.5"  
TOP OD: 24" x 24"  
BASE ID: 15.5" x 15.5"  
BASE OD: 24" x 24"  
HEIGHT: 24"  
WEIGHT: 33 LBS

NOTE:  
COMBINED ASSEMBLY TO WEIGH APPROX. 32.5 LBS. AFTER TRIMMING AT 3/16" WALL.

**TerraCast<sup>®</sup>**  
PRODUCTS

TITLE

**Millennium Cube Assembly**

PART#

**TSS24-24**

DRAWN  
KT

SIZE

MATERIAL

DWG NO

DATE

REV

LLDPE Resin

03-16-21

SCALE

WEIGHT

SHEET 1/3

DO NOT SCALE DRAWING.

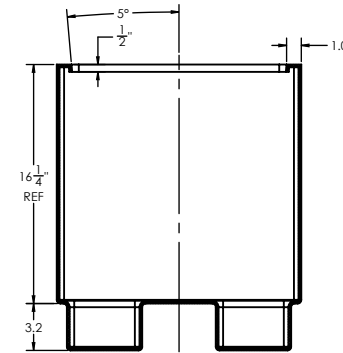
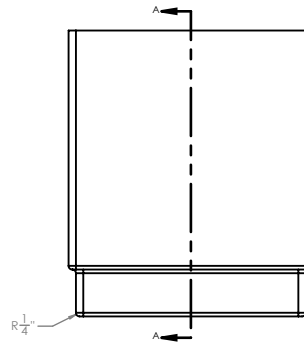
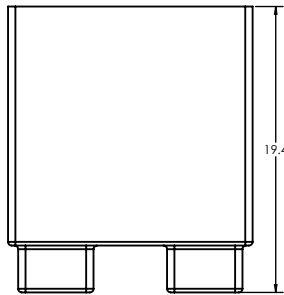
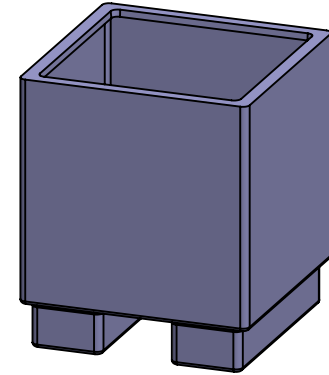
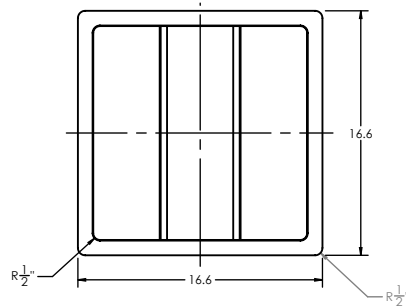
All measurements are rounded to the closest quarter inch and may not be exact due to manufacturing variances.

This document contains TERRACAST<sup>®</sup> PROPRIETARY INFORMATION. No intellectual property right or license is granted by TERRACAST<sup>®</sup> in connection with it. It is delivered on the express condition that the document and the information contained in it shall be treated as confidential, shall not be used for and purpose other than that for which it is hereby delivered (the use and maintenance of the product supplied). It shall not be disclosed in whole or part to third parties and shall not be duplicated in any manner without TERRACAST<sup>®</sup>'s prior written consent.

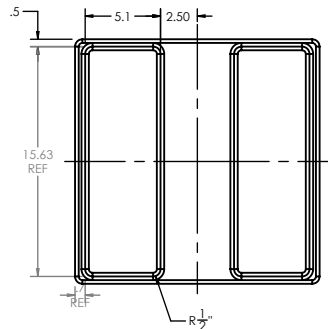
# TerraCast<sup>®</sup>

## PRODUCTS

TERRACAST PRODUCTS LLC  
4400 NW 19TH AVENUE, UNIT K  
POMPANO BEACH, FL 33064  
305-895-9525  
INFO@TERRACASTPRODUCTS.COM



SECTION A-A



### SPECS AT A GLANCE

TOP ID: 15.5" x 15.5"  
TOP OD: 16.5" x 16.5"  
BASE ID: 15.5" x 15.5"  
BASE OD: 16.5" x 16.5"  
HEIGHT: 19.5"  
WEIGHT: 11 LBS

#### NOTE:

PART TO WEIGH APPROX. 10.3 LBS. AFTER TRIMMING AT 3/16" WALL.

**TerraCast<sup>®</sup>**  
PRODUCTS

#### TITLE

**Millennium Cube Liner**

#### PART#

**TSS24-24-Liner**

DRAWN  
KT

#### SIZE

#### MATERIAL

LLDPE Resin

#### DWG NO

#### DATE

03-16-21

#### REV

#### SCALE

#### WEIGHT

SHEET 2/3

DO NOT SCALE DRAWING.

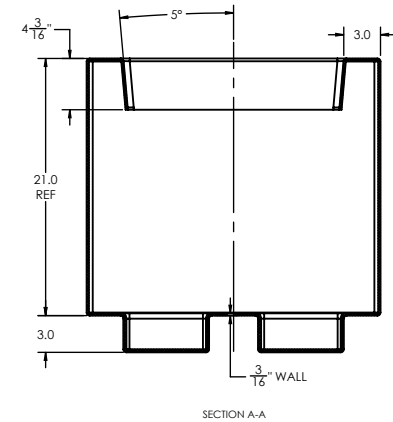
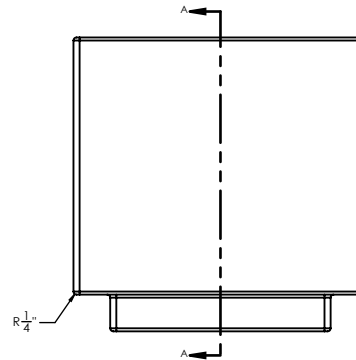
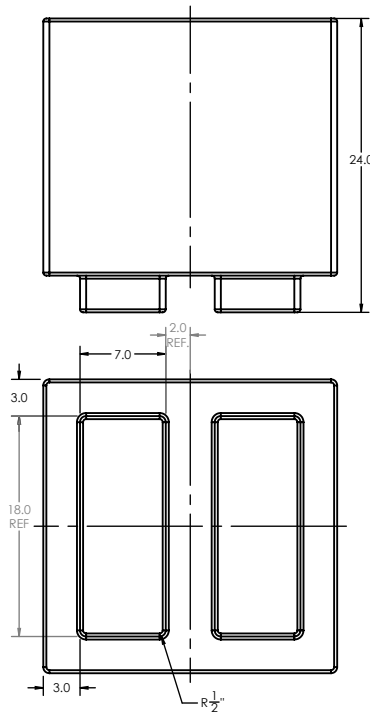
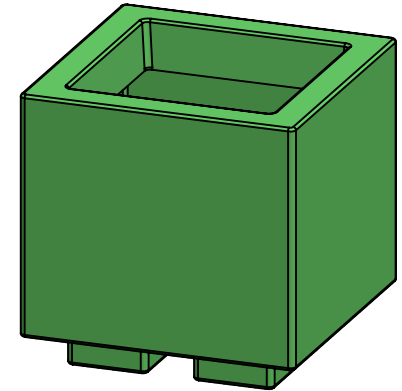
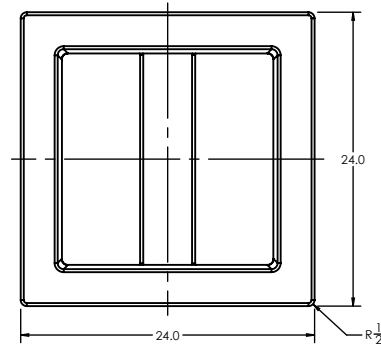
All measurements are rounded to the closest quarter inch and may not be exact due to manufacturing variances.

This document contains TERRACAST<sup>®</sup> PROPRIETARY INFORMATION. No intellectual property right or license is granted by TERRACAST<sup>®</sup> in connection with it. It is delivered on the express condition that the document and the information contained in it shall be treated as confidential, shall not be used for and purpose other than that for which it is hereby delivered (the use and maintenance of the product supplied). It shall not be disclosed in whole or part to third parties and shall not be duplicated in any manner without TERRACAST<sup>®</sup>'s prior written consent.

# TerraCast<sup>®</sup>

## PRODUCTS

TERRACAST PRODUCTS LLC  
4400 NW 19TH AVENUE, UNIT K  
POMPANO BEACH, FL 33064  
305-895-9525  
INFO@TERRACASTPRODUCTS.COM



NOTE:  
PART TO WEIGH APPROX. 22.2 LBS. AFTER TRIMMING AT 3/16" WALL.

### SPECS AT A GLANCE

TOP ID: 18" x 18"  
TOP OD: 24" x 24"  
BASE ID: 18" x 18"  
BASE OD: 24" x 24"  
HEIGHT: 24"  
WEIGHT: 23 LBS

DO NOT SCALE DRAWING.

All measurements are rounded to the closest quarter inch and may not be exact due to manufacturing variances.

This document contains TERRACAST<sup>®</sup> PROPRIETARY INFORMATION. No intellectual property right or license is granted by TERRACAST<sup>®</sup> in connection with it. It is delivered on the express condition that the document and the information contained in it shall be treated as confidential, shall not be used for and purpose other than that for which it is hereby delivered (the use and maintenance of the product supplied). It shall not be disclosed in whole or part to third parties and shall not be duplicated in any manner without TERRACAST<sup>®</sup>'s prior written consent.

**TerraCast<sup>®</sup>**  
PRODUCTS

TITLE

**Millennium Cube Shell**

PART#

**TSS24-24**

DRAWN  
KT

SIZE

MATERIAL

DWG NO

DATE

REV

LLDPE Resin

03-16-21

SCALE

WEIGHT

SHEET 3/3