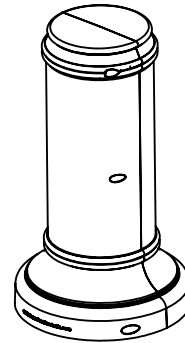
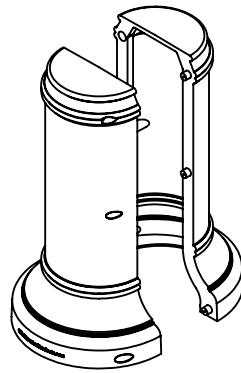


# TerraCast<sup>®</sup>

## PRODUCTS

TERRACAST PRODUCTS LLC  
 4400 NW 19TH AVENUE, UNIT K  
 POMPANO BEACH, FL 33064  
 305-895-9525  
 INFO@TERRACASTPRODUCTS.COM



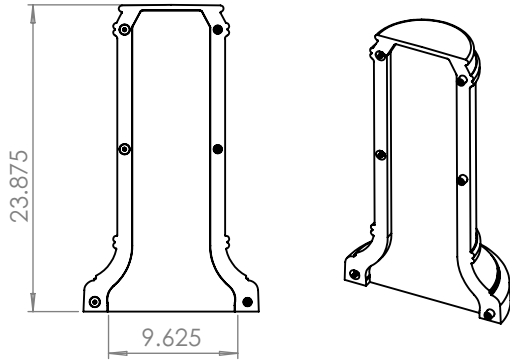
ITEM NO.	PART NUMBER	DESCRIPTION	QTY.
1	BERKLEY TC-BRK24		1
2	Screw 0.25-20x1-HX-N	Powder Coated	6

### SPECS AT A GLANCE

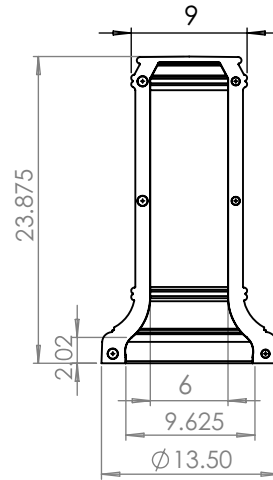
TOP ID: UP TO 6"  
 TOP OD: 9"  
 BASE ID: 9.625"  
 BASE OD: 13.5"  
 HEIGHT: 23.875"  
 WEIGHT: 8 LBS

Two Part Assembly - Exploded

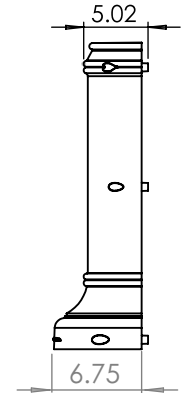
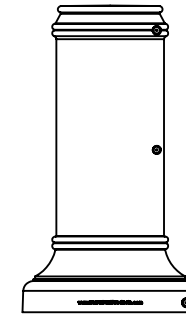
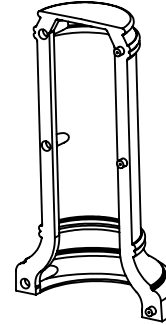
Two Part Assembly - Closed  
 Maximum Pole Diameter: 6" OD



UNTRIMMED



TRIMMED



Side View

DO NOT SCALE DRAWINGS.

All measurements are rounded to the closest quarter inch and may not be exact due to manufacturing variances.

This document contains TERRACAST<sup>®</sup> PROPRIETARY INFORMATION. No intellectual property right or license is granted by TERRACAST<sup>®</sup> in connection with it. It is delivered on the express condition that the document and the information contained in it shall be treated as confidential, shall not be used for and purpose other than that for which it is hereby delivered (the use and maintenance of the product supplied). It shall not be disclosed in whole or part to third parties and shall not be duplicated in any manner without TERRACAST<sup>®</sup>'s prior written consent.

**TerraCast<sup>®</sup>**  
 PRODUCTS

TITLE

**Small Berkley Base**

PART# TC-BRK24

DRAWN  
 KT

SIZE	MATERIAL	DWG NO	DATE	REV
	LLDPE RESIN		03-05-24	

SCALE	WEIGHT	SHEET 1/1
-------	--------	-----------