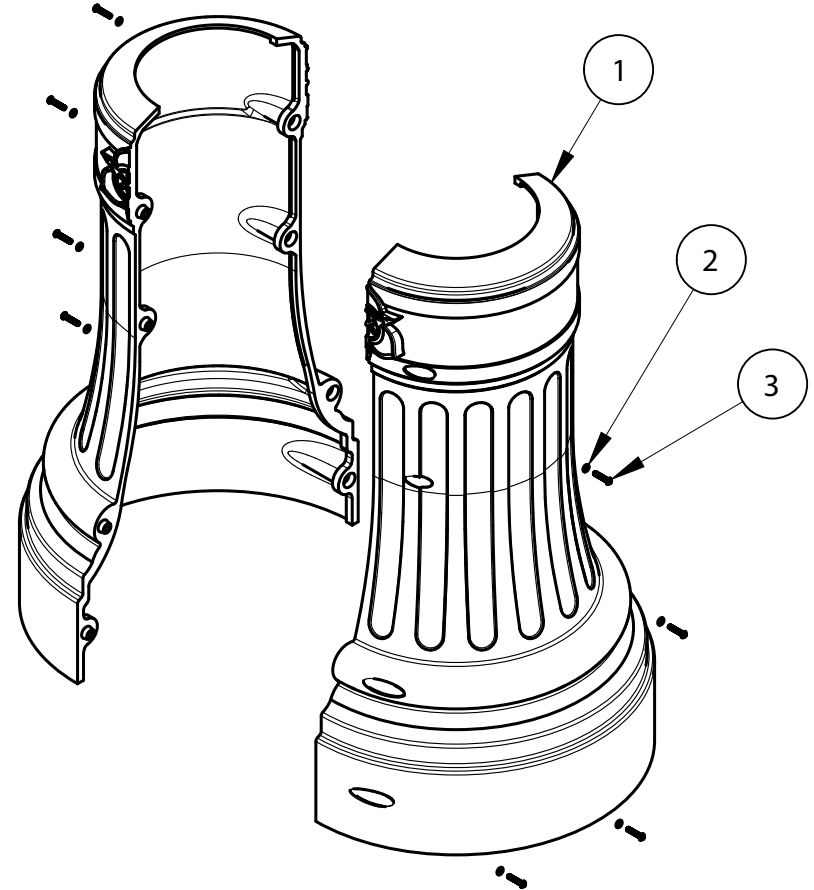
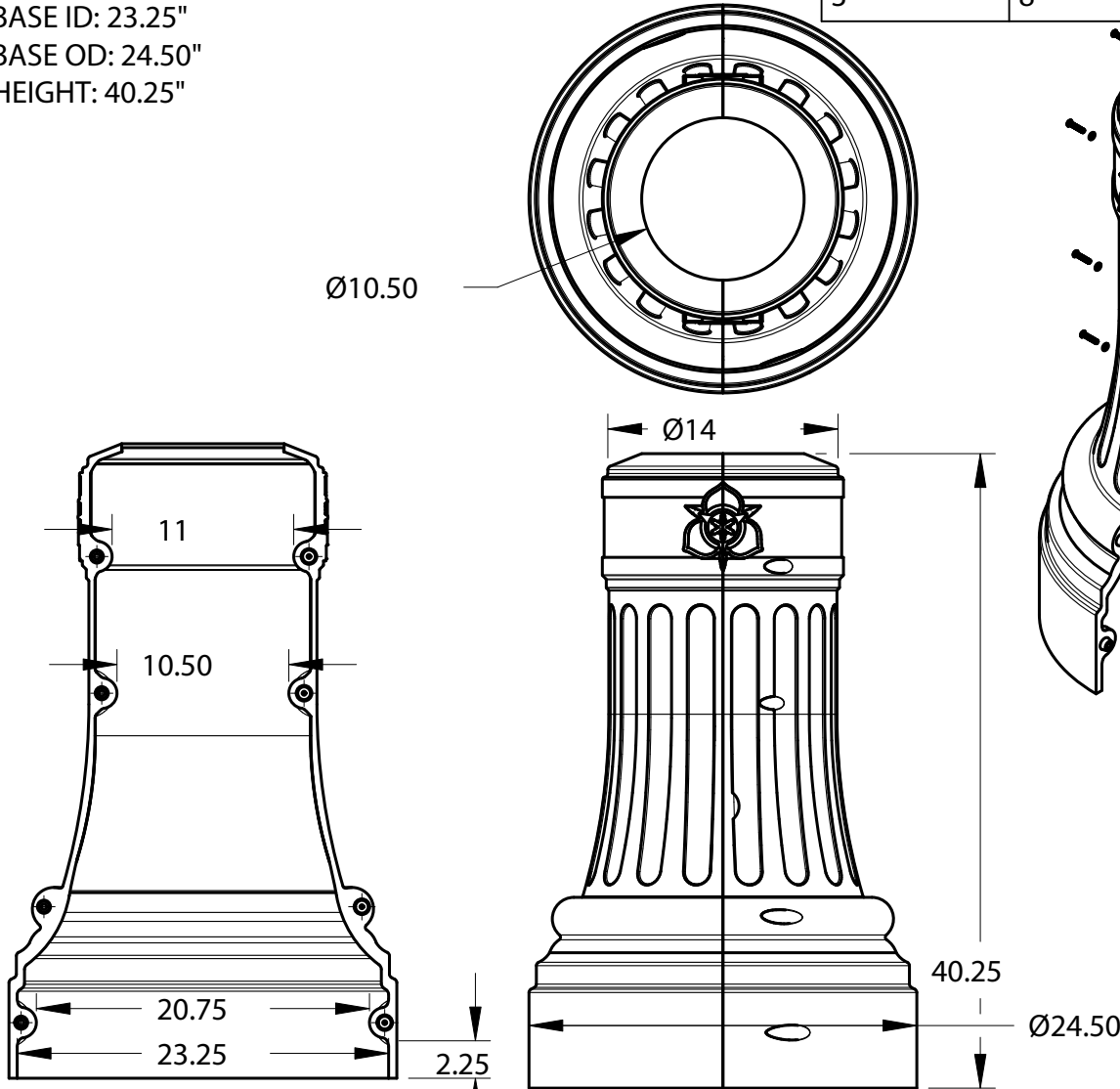


SPECS AT A GLANCE

ASSEMBLED WEIGHT: 21 Lbs.
 TOP ID: UP TO 10.50"
 TOP OD: 14"
 BASE ID: 23.25"
 BASE OD: 24.50"
 HEIGHT: 40.25"

Item	Quantity	Part number	Description
1	2	TC-SLC40	SLC Base
2	8		Preferred FW 0.25
3	8	91900A544	TRBHSCRW 0.25-20x1.25-TX-N



TerraCast[®]
 PRODUCTS

4400 NW 19th Avenue, Unit K. Pompano Beach, FL 33064
 info@terraCastproducts.com p: 305.895.9525
 www.terraCastproducts.com

PROPRIETARY AND CONFIDENTIAL
 THE INFORMATION CONTAINED IN THIS
 DRAWING IS THE SOLE PROPERTY OF
 TerraCast Products, LLC. ANY
 REPRODUCTION IN PART OR AS A WHOLE
 WITHOUT THE WRITTEN PERMISSION OF
 TerraCast Products, LLC IS PROHIBITED.

UNLESS OTHERWISE SPECIFIED,
 DIMENSIONS ARE IN INCHES

XX = ±0-
 .XXX = ±.00-
 .XXXX = ±.000-
 ANGULAR = ±°
 FRACTIONAL = ±

All measurements are rounded
 to the closest quarter inch and
 may not be exact due to
 manufacturing variances.

MATERIAL
LLDPE Resin

DO NOT SCALE DRAWING

BREAK ALL SHARP EDGES AND
 REMOVE BURRS

THIRD ANGLE PROJECTION



NAME DATE

DRAWN CC 05/01/2025

CHECKED

APPROVED

SIZE	TITLE	REV
A	SLC BASE TC-SLC40	D
SCALE 1:12	WEIGHT	SHEET 1 of 1