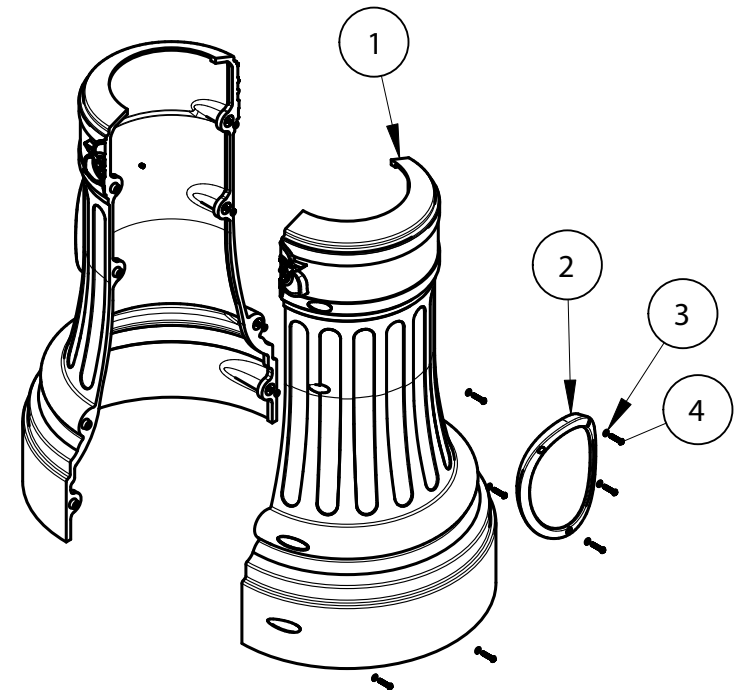
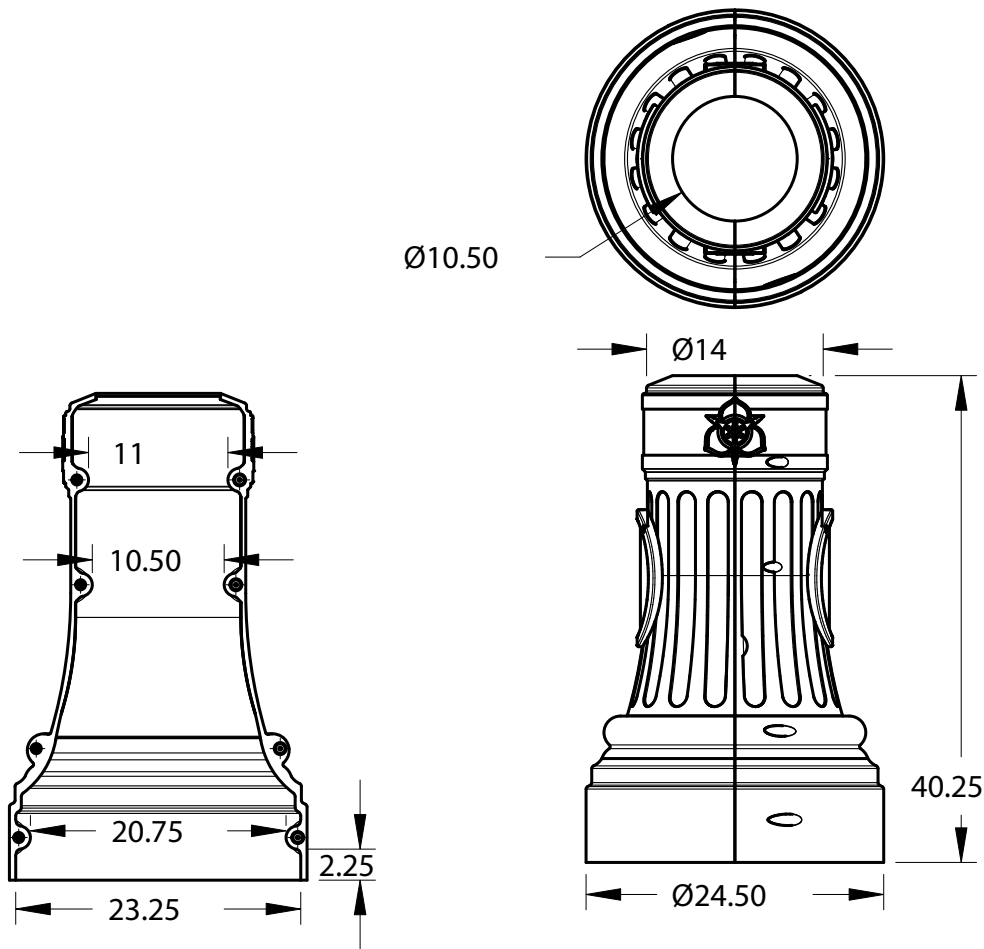



2	SPECS AT A GLANCE			
	ASSEMBLED WEIGHT: 23 Lbs.			
	TOP ID: UP TO 10.50"			
	TOP OD: 14"			
	BASE ID: 23.25"			
1	BASE OD: 24.50"			
	HEIGHT: 40.25"			
	Item	Quantity	Part number	Description
	1	2	TC-SLC40	SLC Base
	2	2		SLC Customizable Plate
	3	14		Preferred FW 0.25
	4	14	91900A544	TRBHSCRW 0.25-20x1.25-TX-N



TerraCast[®]
PRODUCTS

4400 NW 19th Avenue, Unit K. Pompano Beach, FL 33064
info@terraCastproducts.com p: 305.895.9525
www.terraCastproducts.com

PROPRIETARY AND CONFIDENTIAL THE INFORMATION CONTAINED IN THIS DRAWING IS THE SOLE PROPERTY OF TerraCast Products, LLC. ANY REPRODUCTION IN PART OR AS A WHOLE WITHOUT THE WRITTEN PERMISSION OF TerraCast Products, LLC IS PROHIBITED.	UNLESS OTHERWISE SPECIFIED, DIMENSIONS ARE IN INCHES XX = ±.0- XXX = ±.00- XXXX = ±.000- ANGULAR = ±° FRACTIONAL = ±	DO NOT SCALE DRAWING		NAME	DATE	4400 NW 19th Avenue, Unit K, Pompano Beach, FL 33064 info@terraicastproducts.com p: 305.895.9525 www.terraicastproducts.com					
		BREAK ALL SHARP EDGES AND REMOVE BURRS	DRAWN	CC	05/05/2025	SIZE	TITLE:	SLC Base with Custom Plate		REV.	
	All measurements are rounded to the closest quarter inch and may not be exact due to manufacturing variances.	MATERIAL LLDPE Resin	THIRD ANGLE PROJECTION	CHECKED			SCALE	1:16	WEIGHT	SHEET	1 of 1
				APPROVED							